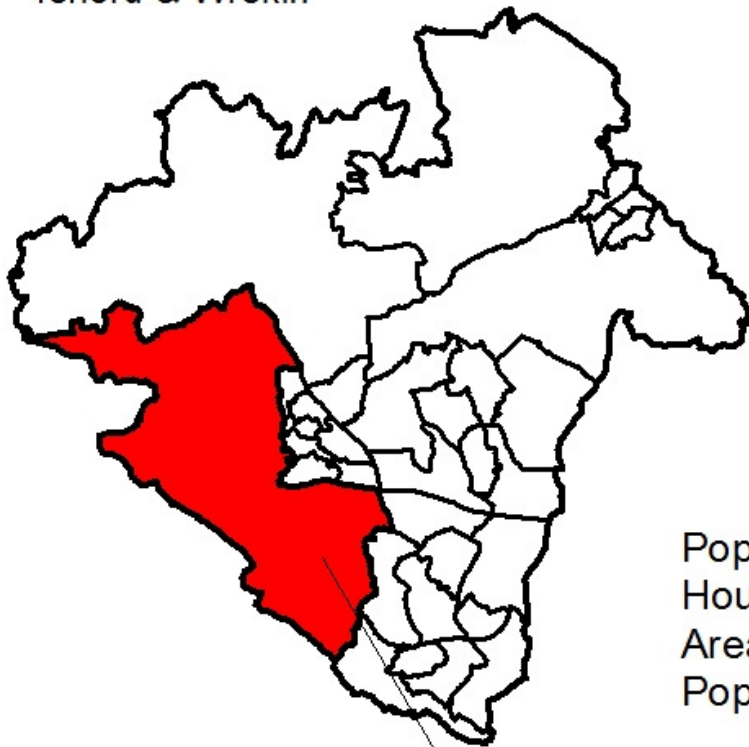
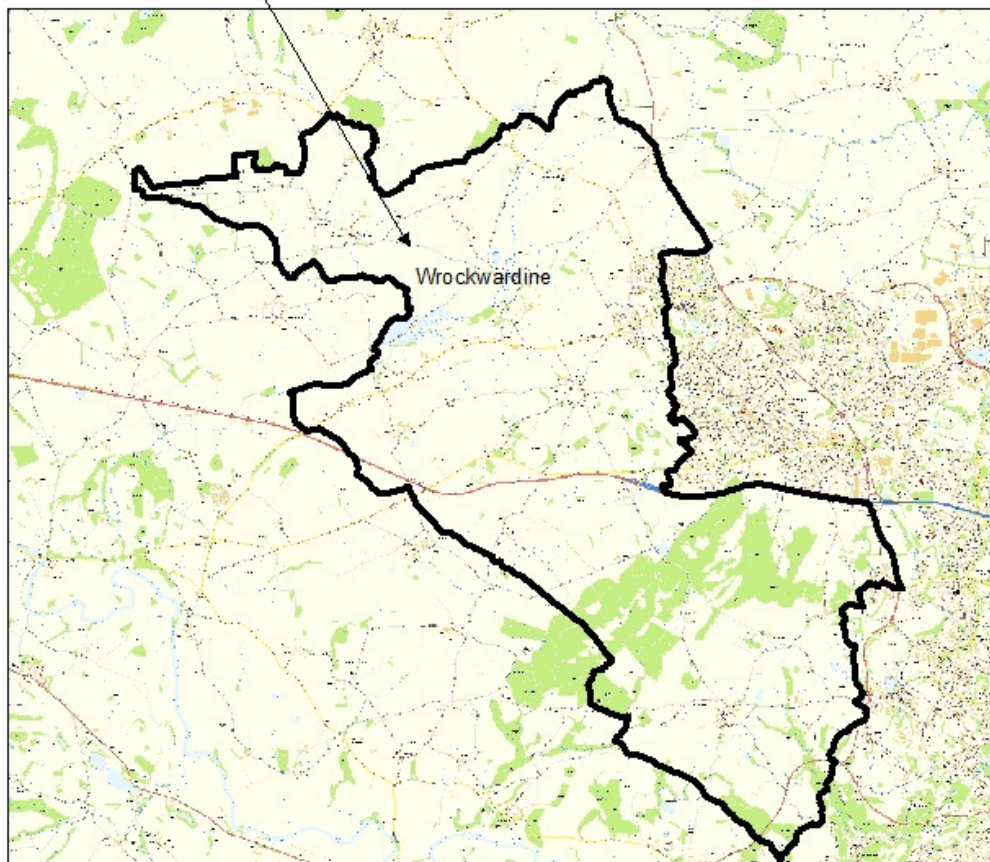


Wrockwardine – 2011 Census Profile

Telford & Wrekin



Population: 5,912
Households: 2,267
Area (hectares): 5,392.18
Population Density: 1.1



©Crown copyright. All rights reserved. Borough of Telford & Wrekin Licence No. 100019694. Date. 2013

1 Population Characteristics

Summary:

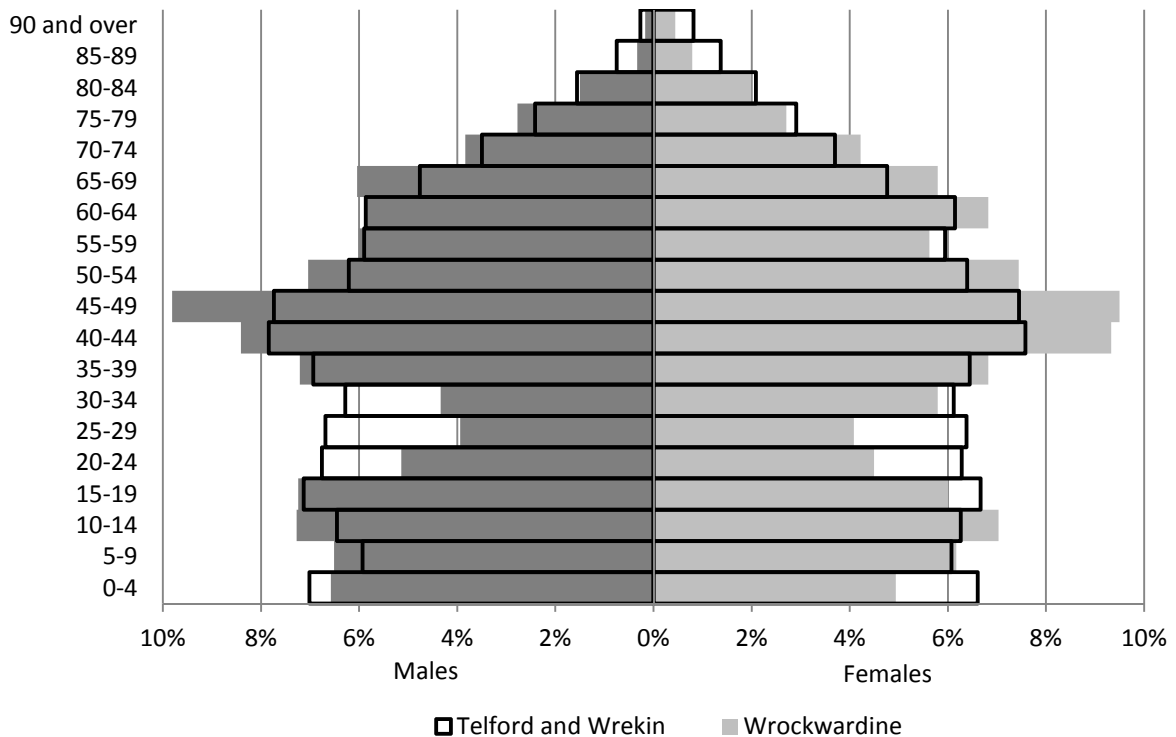
- Wrockwardine’s population increased by 21.8% between 2001 and 2011.
- In the ten years prior to the 2011 Census, the 0-15 age group in the ward increased by 20.3%, with those aged 16-24 also increasing by 76.8%, but at 10.0% of the population this remains below the Borough average of 12.1%.
- The age structure of Wrockwardine is different to that seen Borough wide with lower proportions of 20-34 year olds, and higher proportion of 40-54 year olds.

Table 1: Age structure

| | Wrockwardine | | | | Telford and Wrekin 2011 % |
|----------------------------|--------------|---------------|--------------|---------------|---------------------------|
| | 2011 | | 2001 | | |
| | People | % | People | % | |
| 0-4 | 341 | 5.8% | 307 | 6.3% | 6.8% |
| 5-9 | 375 | 6.3% | 337 | 6.9% | 6.0% |
| 10-15 | 506 | 8.6% | 372 | 7.7% | 7.7% |
| 16-24 | 594 | 10.0% | 336 | 6.9% | 12.1% |
| 25-44 | 1,475 | 24.9% | 1,487 | 30.6% | 27.1% |
| 45-64 | 1,717 | 29.0% | 1,426 | 29.4% | 25.8% |
| 65-84 | 853 | 14.4% | 557 | 11.5% | 12.8% |
| 85+ | 51 | 0.9% | 31 | 0.6% | 1.6% |
| <i>All usual residents</i> | <i>5,912</i> | <i>100.0%</i> | <i>4,853</i> | <i>100.0%</i> | <i>100.0%</i> |

Source: Office for National Statistics 2001 and 2011 Census (KS102)

Figure 1: Population pyramid



Source: Office for National Statistics 2011 Census (PP05 and PP06)

2 Diversity

Summary:

- The BME population of Wrockwardine more than doubled between 2001 and 2011, but at 7.8% of the population remains below the Borough rate of 10.6%.
- The 'other White' group within the Wrockwardine Wood & Trench has grown by over 100 people and is now the largest BME group in the ward.
- The proportion of Christians in the ward fell from 80.1% to 70.6% between 2001 and 2011 remaining above the Borough rate of 61.7%. The number of people with no religion in the ward more than doubled, but at 20.7% was still well below the Borough figure of 27.4%.
- For the first time in a census, people were asked for their main language. Just 2.1% of the ward has a main language other than English, nearly half the Borough figure of 4.1%. Of these the majority (1.8% of the population) are able to speak English well or very well.

Table 2: Ethnic background

| | Wrockwardine | | | | Telford and Wrekin 2011 % |
|---------------------------------------|--------------|---------------|--------------|---------------|---------------------------------|
| | 2011 | | 2001 | | |
| | People | % | People | % | |
| White British | 5,451 | 92.2% | 4,644 | 95.5% | 89.5% |
| Other White | 187 | 3.2% | 83 | 1.7% | 3.2% |
| Mixed/multiple | 71 | 1.2% | 21 | 0.4% | 1.8% |
| Asian/Asian British | 164 | 2.8% | 90 | 1.9% | 4.2% |
| Black/African/Caribbean/Black British | 31 | 0.5% | 6 | 0.1% | 1.1% |
| Other ethnic group | 8 | 0.1% | 19 | 0.4% | 0.3% |
| All BME | 461 | 7.8% | 219 | 4.5% | 10.6% |
| <i>All usual residents</i> | <i>5,912</i> | <i>100.0%</i> | <i>4,863</i> | <i>100.0%</i> | <i>100.0%</i> |

Source: Office for National Statistics 2001 and 2011 Census (KS201)

Table 3: Religion

| | Wrockwardine | | | | Telford and Wrekin 2011 % |
|----------------------------|--------------|---------------|--------------|---------------|---------------------------------|
| | 2011 | | 2001 | | |
| | People | % | People | % | |
| Buddhist | 8 | 0.1% | 15 | 0.3% | 0.2% |
| Christian | 4,172 | 70.6% | 3,897 | 80.1% | 61.7% |
| Hindu | 32 | 0.5% | 7 | 0.1% | 0.5% |
| Jewish | 2 | 0.0% | 6 | 0.1% | 0.0% |
| Muslim | 19 | 0.3% | 20 | 0.4% | 1.8% |
| Sikh | 74 | 1.3% | 43 | 0.9% | 1.3% |
| Other religion | 27 | 0.5% | 8 | 0.2% | 0.4% |
| No religion | 1,222 | 20.7% | 531 | 10.9% | 27.4% |
| Religion not stated | 356 | 6.0% | 338 | 6.9% | 6.6% |
| Total with religion | 4,334 | 73.3% | 3,997 | 82.2% | 66.1% |
| <i>All usual residents</i> | <i>5,912</i> | <i>100.0%</i> | <i>4,865</i> | <i>100.0%</i> | <i>100.0%</i> |

Source: Office for National Statistics 2001 Census (KS007) and 2011 Census (KS209)

Wrockwardine – 2011 Census Profile

Table 4: English language proficiency

| | | Wrockwardine | | Telford and Wrekin |
|-----------------------------------|-------------------------------|--------------|--------|--------------------|
| | | 2011 | | 2011 |
| | | People | % | % |
| Main language is English | | 5,587 | 97.9% | 95.9% |
| Main language is not English | Speaks English very well | 58 | 1.0% | 1.4% |
| | Speaks English well | 44 | 0.8% | 1.7% |
| | Does not speak English well | 9 | 0.2% | 0.9% |
| | Does not speak English at all | 8 | 0.1% | 0.2% |
| <i>All people aged 3 and over</i> | | 5,706 | 100.0% | 100.0% |

Source: Office for National Statistics 2011 Census (QS205)

3 Household and family characteristics

Summary:

- The 2011 Census found 2,267 occupied household spaces in Wrockwardine, accommodating 5,874 people, giving an average household size of 2.59, slightly higher than the Borough wide household size of 2.47.
- Around a fifth (20.4%) of households in Wrockwardine are one person households, lower than the Borough figure of 25.2%
- The predominant household type in the ward, at nearly a quarter of households (23.7%), is married couples with dependent children, although this household type has decreased since 2001.
- Just 6.5% of households do not have access to car, less than a third of the Borough rate. The average number of cars per household is 1.77 higher than the 1.27 average Borough wide.
- Just three households in Wrockwardine (0.1%) were deprived across all four dimensions, with just 55 households (2.4%) deprived in three dimensions, less than half the 5.9% of households Borough wide deprived in three or more dimensions.

Table 5: Household structure

| | | Wrockwardine | | | | Telford and Wrekin | |
|----------------------------|--|----------------------------|--------|--------|--------|--------------------|-------|
| | | 2011 | | 2001 | | 2011 | |
| | | HHolds | % | HHolds | % | % | |
| One person | Aged 65 and over | 208 | 9.2% | 144 | 7.4% | 10.7% | |
| | Other | 255 | 11.2% | 231 | 11.9% | 14.5% | |
| One family and no others | All aged 65 and over | | 213 | 9.4% | 189 | 9.8% | 7.6% |
| | Married couple households (including same-sex civil partnership couple households) | No children | 371 | 16.4% | 364 | 18.8% | 13.8% |
| | | With dependent children | 537 | 23.7% | 458 | 23.7% | 16.4% |
| | | All children non-dependent | 181 | 8.0% | 147 | 7.6% | 6.1% |
| | Cohabiting couple households (including same-sex cohabiting couple households) | No children | 124 | 5.5% | 103 | 5.3% | 5.7% |
| | | With dependent children | 86 | 3.8% | 61 | 3.2% | 5.6% |
| | | All children non-dependent | 11 | 0.5% | 12 | 0.6% | 0.6% |
| | Lone parent households | With dependent children | 98 | 4.3% | 72 | 3.7% | 8.1% |
| All children non-dependent | | 55 | 2.4% | 63 | 3.3% | 3.6% | |
| Other households | With dependent children | 48 | 2.1% | 42 | 2.2% | 2.9% | |
| | All full-time student | 0 | 0.0% | 0 | 0.0% | 0.3% | |
| | All aged 65 and over | 7 | 0.3% | 0 | 0.0% | 0.2% | |
| | Other | 73 | 3.2% | 50 | 2.6% | 3.8% | |
| <i>All households</i> | | 2,267 | 100.0% | 1,936 | 100.0% | 100.0% | |

Source: Office for National Statistics 2001 Census (S053) and 2011 Census (QS113)

Wrockwardine – 2011 Census Profile

Table 6: Households access to cars or vans

| | Wrockwardine | | | | Telford and Wrekin 2011 % |
|--|--------------|---------------|--------------|---------------|---------------------------|
| | 2011 | | 2001 | | |
| | HHolds | % | HHolds | % | |
| No car or van | 147 | 6.5% | 131 | 6.8% | 20.6% |
| 1 car or van | 767 | 33.8% | 762 | 39.7% | 43.1% |
| 2 cars or vans | 975 | 43.0% | 796 | 41.4% | 27.9% |
| 3 cars or vans | 271 | 12.0% | 172 | 9.0% | 6.3% |
| 4 or more cars or vans | 107 | 4.7% | 60 | 3.1% | 2.1% |
| <i>All households</i> | <i>2,267</i> | <i>100.0%</i> | <i>1,921</i> | <i>100.0%</i> | <i>100.0%</i> |
| Sum of all cars or vans in the area | 4,016 | n/a | 3,128 | n/a | 84,671 |
| Average cars or vans per household | 1.77 | n/a | 1.63 | n/a | 1.27 |

Source: Office for National Statistics 2001 Census (UV62) and 2011 Census (KS404)

Table 7: Household deprivation

| | Wrockwardine | | | | Telford and Wrekin 2011 % |
|---|--------------|---------------|--------------|---------------|---------------------------|
| | 2011 | | 2001 | | |
| | HHolds | % | HHolds | % | |
| Household not deprived in any dimension | 1,232 | 54.3% | 756 | 39.4% | 41.7% |
| Household is deprived in 1 dimension | 705 | 31.1% | 686 | 35.7% | 32.1% |
| Household is deprived in 2 dimensions | 272 | 12.0% | 352 | 18.3% | 20.3% |
| Household is deprived in 3 dimensions | 55 | 2.4% | 120 | 6.2% | 5.5% |
| Household is deprived in 4 dimensions | 3 | 0.1% | 7 | 0.4% | 0.4% |
| Total deprived in at least one dimension | 1,035 | 45.7% | 1,165 | 60.6% | 58.3% |
| <i>All households</i> | <i>2,267</i> | <i>100.0%</i> | <i>1,921</i> | <i>100.0%</i> | <i>100.0%</i> |

Source: Office for National Statistics 2001 Census (UV67) and 2011 Census (QS119)

4 Housing

Summary:

- The number of household spaces in Wrockwardine has increased by 359 since 2001 accounting for more than a tenth (11.3%) of the 3,181 growth seen Borough wide.
- More than half (54.0%) of households in Wrockwardine live in a detached house or bungalow, considerably higher than the Borough figure of 30.8%.
- More than a third of households in Wrockwardine (34.9%) own their home outright (27.2% Borough wide) with a further 45.3% of households owning their home through a loan or mortgage, considerably higher than the 36.5% in this position Borough wide.
- A total of 45 households in Wrockwardine mistakenly believe they rent their home from the Council, a slight decrease from 50 in 2001.
- The number of households in Apley Castle privately renting their home has nearly doubled since 2001, as seen Borough wide.

Table 8: Housing stock

| | Wrockwardine | | | | Telford and Wrekin 2011 % |
|-----------------------------|--------------|---------------|--------------|---------------|---------------------------|
| | 2011 | | 2001 | | |
| | HHold spaces | % | HHold spaces | % | |
| Occupied household space | 2,267 | 97.5% | 1,921 | 97.7% | 96.9% |
| Unoccupied household space | 59 | 2.5% | 46 | 2.3% | 3.1% |
| <i>All household spaces</i> | <i>2,326</i> | <i>100.0%</i> | <i>1,967</i> | <i>100.0%</i> | <i>100.0%</i> |

Source: Office for National Statistics 2001 Census (UV53) and 2011 Census (QS417)

Wrockwardine – 2011 Census Profile

Table 9: Accommodation type

| | | Wrockwardine | | | | Telford and Wrekin 2011 % |
|--|---|--------------|---------------|--------------|---------------|---------------------------------|
| | | 2011 | | 2001 | | |
| | | H Holds | % | H Holds | % | |
| House or bungalow | Detached | 1,225 | 54.0% | 1,099 | 55.9% | 30.8% |
| | Semi-detached | 720 | 31.8% | 653 | 33.2% | 36.7% |
| | Terrace (including end terrace) | 209 | 9.2% | 114 | 5.8% | 22.2% |
| Flat, maisonette or apartment | Purpose built | 49 | 2.2% | 13 | 0.7% | 8.6% |
| | Part of a converted or shared house (includes bed-sits) | 15 | 0.7% | 25 | 1.3% | 0.8% |
| | In a commercial building | 7 | 0.3% | 15 | 0.8% | 0.5% |
| Caravan or other mobile or temporary structure | | 42 | 1.9% | 48 | 2.4% | 0.4% |
| In a shared dwelling | | 0 | 0.0% | 0 | 0.0% | 0.0% |
| <i>All households</i> | | <i>2,267</i> | <i>100.0%</i> | <i>1,967</i> | <i>100.0%</i> | <i>100.0%</i> |

Source: Office for National Statistics 2001 Census (UV056) and 2011 Census (QS402)

Table 10: Tenure

| | | Wrockwardine | | | | Telford and Wrekin 2011 % |
|-----------------------|--|--------------|--------------|--------------|---------------|---------------------------------|
| | | 2011 | | 2001 | | |
| | | H Holds | % | H Holds | % | |
| Owned | Owns outright | 790 | 34.8% | 663 | 34.5% | 27.2% |
| | Owns with a mortgage or loan | 1,027 | 45.3% | 923 | 48.0% | 36.5% |
| Shared ownership | | 25 | 1.1% | 9 | 0.5% | 0.4% |
| Social rented | Rented from Council (Local Authority) | 45 | 2.0% | 50 | 2.6% | 8.1% |
| | Other social rented | 79 | 3.5% | 61 | 3.2% | 11.6% |
| Private rented | Private landlord or letting agency | 265 | 11.7% | 154 | 8.0% | 13.6% |
| | Employer of a household member | 0 | 0.0% | 9 | 0.5% | 0.2% |
| | Relative or friend of household member | 15 | 0.7% | 12 | 0.6% | 0.9% |
| | Other | 2 | 0.1% | 10 | 0.5% | 0.2% |
| Lives rent free | | 19 | 0.8% | 30 | 1.6% | 1.2% |
| <i>All households</i> | | <i>2,267</i> | <i>100.0</i> | <i>1,921</i> | <i>100.0%</i> | <i>100.0%</i> |

Source: Office for National Statistics 2001 Census (UV63) and 2011 Census (QS405)

5 Employment and economy

Summary:

- Between 2001 and 2011 the economically active population in Wrockwardine increased slightly from 72.5% to 73.4%, above the Borough rate (69.4%).
- Unemployment rate in the ward increased from 1.5 % in 2001 to 2.9% in 2011.
- A total of 5.2% of Wrockwardine residents aged 16-74 have never worked, below the Borough rate of 7.2%.
- A fifth of Wrockwardine residents aged 16-74 in employment (19.8%) are employed in 'professional occupations', an increase since 2001 and higher than the Borough rate of 13.9%.
- A third of Household Reference Persons in Wrockwardine (33.8%) are classed as social grade C1 – supervisory, clerical, junior managerial/administrative/professional, with nearly a third (30.6%) classed as social grade AB – higher and intermediate managerial/administrative/professional. Just 15.9% of HRP's in the ward are classed as DE – semi-skilled and unskilled manual workers / on state benefit, unemployed, lowest grade workers, half the Borough figure of 30.8%.
- The proportion of people in Wrockwardine who travel to work driving a car or van has increased from 73.4% in 2001 to 79.4% in 2011, higher than the Borough rate of 70.0%.
- Nearly a third (32.3%) of ward residents aged 16+ have level 4 and above qualifications, considerably higher than the 20.9% Borough wide.

Wrockwardine – 2011 Census Profile

Table 11: Economic Activity

| | | Wrockwardine | | | | Telford and Wrekin |
|---------------------------------------|------------------------------------|--------------|---------------|--------------|---------------|--------------------|
| | | 2011 | | 2001 | | 2011 |
| | | People | % | People | % | % |
| Economically active | Full time employees | 1,809 | 41.4% | 1,647 | 45.5% | 41.4% |
| | Part time employees | 640 | 14.6% | 462 | 12.8% | 13.5% |
| | Self employed | 510 | 11.7% | 403 | 11.1% | 7.0% |
| | Unemployed | 128 | 2.9% | 56 | 1.5% | 4.7% |
| | Full time students | 122 | 2.8% | 54 | 1.5% | 2.8% |
| | Total economically active | 3,209 | 73.4% | 2,622 | 72.5% | 69.4% |
| Economically inactive | Retired | 691 | 15.8% | 487 | 13.5% | 13.7% |
| | Students | 164 | 3.7% | 93 | 2.6% | 5.1% |
| | Looking after home or family | 159 | 3.6% | 210 | 5.8% | 4.8% |
| | Long term sick or disabled | 96 | 2.2% | 145 | 4.0% | 4.9% |
| | Other | 55 | 1.3% | 61 | 1.7% | 2.0% |
| | Total economically inactive | 1,165 | 26.6% | 996 | 27.5% | 30.5% |
| <i>All usual residents aged 16-74</i> | | <i>4,374</i> | <i>100.0%</i> | <i>3,618</i> | <i>100.0%</i> | <i>100.0%</i> |

Source: Office for National Statistics 2001 Census (S021) and 2011 Census (QS601)

Table 12: Year last worked

| | Wrockwardine | | | | Telford and Wrekin | |
|--|--------------|--------------|---------------|--------------|--------------------|---------------|
| | 2011 | | 2001 | | 2011 | |
| | People | % | People | % | % | |
| In employment | 3,056 | 69.9% | 2,559 | 70.7% | 64.1% | |
| Last worked in 2011 (2001) | 46 | 1.1% | 76 | 2.1% | 1.3% | |
| Last worked in 2010 (2000) | 168 | 3.8% | 116 | 3.2% | 4.7% | |
| Last worked in 2009 (1999) | 114 | 2.6% | 114 | 3.1% | 2.9% | |
| Last worked in 2008 (1998) | 75 | 1.7% | 51 | 1.4% | 2.2% | |
| Last worked in 2007 (1997) | 79 | 1.8% | 47 | 1.3% | 1.6% | |
| Last worked in 2006 (1996) | 64 | 1.5% | 60 | 1.7% | 1.5% | |
| Last worked in 2001 – 2005 (1991-1995) | 220 | 5.0% | 197 | 5.4% | 5.8% | |
| Last worked before 2001 (1991) | 326 | 7.5% | 276 | 7.6% | 8.6% | |
| Never worked | 226 | 5.2% | 125 | 3.5% | 7.2% | |
| Total not in employment | 1,318 | 30.1% | 1,062 | 29.3% | 35.9% | |
| <i>All usual residents aged 16-74</i> | | <i>4,374</i> | <i>100.0%</i> | <i>3,621</i> | <i>100.0%</i> | <i>100.0%</i> |

Source: Office for National Statistics 2001 Census (UV027) and 2011 Census (QS612)

Table 13: Occupation

| | Wrockwardine | | | | Telford and Wrekin | |
|---|--------------|--------------|---------------|--------------|--------------------|---------------|
| | 2011 | | 2001 | | 2011 | |
| | People | % | People | % | % | |
| 1. Managers, directors and senior officials | 453 | 14.8% | 491 | 19.2% | 9.5% | |
| 2. Professional occupations | 604 | 19.8% | 314 | 12.3% | 13.9% | |
| 3. Associate professional and technical occupations | 414 | 13.5% | 367 | 14.3% | 11.3% | |
| 4. Administrative and secretarial occupations | 366 | 12.0% | 362 | 14.1% | 11.5% | |
| 5. Skilled trades occupations | 352 | 11.5% | 292 | 11.4% | 11.9% | |
| 6. Caring, leisure and other service occupations | 241 | 7.9% | 128 | 5.0% | 9.3% | |
| 7. Sales and customer service occupations | 228 | 7.5% | 162 | 6.3% | 8.6% | |
| 8. Process, plant and machine operatives | 181 | 5.9% | 234 | 9.1% | 10.8% | |
| 9. Elementary occupations | 217 | 7.1% | 209 | 8.2% | 13.1% | |
| <i>All usual residents aged 16-74 in employment</i> | | <i>3,056</i> | <i>100.0%</i> | <i>2,559</i> | <i>100.0%</i> | <i>100.0%</i> |

Source: Office for National Statistics 2001 Census (UV030) and 2011 Census (QS606)

Wrockwardine – 2011 Census Profile

Table 14: Approximated social grade

| | Wrockwardine 2011 | | Telford and Wrekin 2011 |
|---|----------------------|---------------|-------------------------------|
| | People | % | % |
| AB. Higher and intermediate managerial/administrative/professional | 515 | 30.6% | 18.0% |
| C1. Supervisory, clerical, junior managerial/administrative/professional | 570 | 33.8% | 28.3% |
| C2. Skilled manual workers | 332 | 19.7% | 22.9% |
| DE Semi-skilled and unskilled manual workers / On state benefit, unemployed, lowest grade workers | 268 | 15.9% | 30.8% |
| <i>All Household Reference Persons aged 16 – 64</i> | <i>1,685</i> | <i>100.0%</i> | <i>100.0%</i> |

Source: Office for National Statistics 2011 Census (QS611)

Table 15: Means of Travel to Work

| | Wrockwardine | | | | Telford and Wrekin 2011 |
|---|--------------|---------------|--------------|---------------|-------------------------------|
| | 2011 | | 2001 | | % |
| | People | % | People | % | |
| Working at or from home | 224 | 7.3% | 292 | 11.5% | 4.0% |
| Train, Underground, metro, light rail, tram | 51 | 1.7% | 46 | 1.8% | 1.5% |
| Bus, minibus or coach | 27 | 0.9% | 30 | 1.2% | 4.0% |
| Taxi | 6 | 0.2% | 12 | 0.5% | 1.1% |
| Motorcycle, scooter or moped | 14 | 0.5% | 23 | 0.9% | 0.7% |
| Driving a car or van | 2,426 | 79.4% | 1,869 | 73.4% | 70.0% |
| Passenger in a car or van | 161 | 5.3% | 153 | 6.0% | 8.0% |
| Bicycle | 29 | 0.9% | 37 | 1.5% | 2.1% |
| On foot | 103 | 3.4% | 76 | 3.0% | 8.0% |
| Other | 15 | 0.5% | 9 | 0.4% | 0.5% |
| <i>All usual residents aged 16-74 in employment</i> | <i>3,056</i> | <i>100.0%</i> | <i>2,547</i> | <i>100.0%</i> | <i>100.0%</i> |

Source: Office for National Statistics 2001 Census (S119) and 2011 Census (QS701)

Table 16: Highest level of qualifications

| | Wrockwardine | | | | Telford and Wrekin 2011 |
|---|--------------|---------------|--------------|---------------|-------------------------------|
| | 2011 | | 2001* | | % |
| | People | % | People | % | |
| No qualifications | 768 | 16.4% | 840 | 23.2% | 24.6% |
| Level 1 | 575 | 12.3% | 625 | 17.3% | 15.1% |
| Level 2 | 835 | 17.8% | 771 | 21.3% | 17.9% |
| Apprenticeship | 160 | 3.4% | | | 3.3% |
| Level 3 | 683 | 14.6% | 260 | 7.2% | 13.0% |
| Level 4 and above | 1,514 | 32.3% | 825 | 22.8% | 20.9% |
| Other: Vocational/work-related qualifications, foreign qualifications (level unknown) | 155 | 3.3% | 301 | 8.3% | 5.1% |
| <i>All people aged 16 and over*</i> | <i>4,690</i> | <i>100.0%</i> | <i>3,622</i> | <i>100.0%</i> | <i>100.0%</i> |

*Data for 2001 is for aged 16-74 only so is not directly comparable to 2011.

Source: Office for National Statistics 2001 Census (UV024) and 2011 Census (KS501)

6 Health and care

Summary:

- Some 86.1% of people in Wrockwardine reported good or very good health, compared with 80.2% Borough-wide. Just 43 people, 0.7% reported very bad health, half the Borough rate of 1.4%.
- A total of 14.3% of ward residents felt their day-to-day activities were limited by a long term health problem or disability, lower than the 18.6% seen across the Borough.
- Some 11.2% of residents in Wrockwardine provided unpaid care, slightly higher than the 10.8% seen Borough-wide.

Table 17: General health

| | Wrockwardine 2011 | | Telford and Wrekin 2011 |
|----------------------------|----------------------|---------------|-------------------------------|
| | People | % | % |
| Very good health | 3,086 | 52.2% | 45.9% |
| Good health | 2,006 | 33.9% | 34.3% |
| Fair health | 594 | 10.0% | 13.6% |
| Bad health | 183 | 3.1% | 4.8% |
| Very bad health | 43 | 0.7% | 1.4% |
| <i>All usual residents</i> | <i>5,912</i> | <i>100.0%</i> | <i>100.0%</i> |

Source: Office for National Statistics 2011 Census (KS301)

Table 18: Long-term health problem or disability

| | Wrockwardine | | | | Telford and Wrekin 2011 |
|--|--------------|---------------|--------------|---------------|-------------------------------|
| | 2011 | | 2001 | | % |
| | People | % | People | % | |
| Day-to-day activities limited a lot | 351 | 5.9% | 697 | 14.3% | 9.0% |
| Day-to-day activities limited a little | 492 | 8.3% | | | 9.6% |
| Day-to-day activities not limited | 5,069 | 85.7% | 4,165 | 85.7% | 81.4% |
| <i>All usual residents</i> | <i>5,912</i> | <i>100.0%</i> | <i>4,862</i> | <i>100.0%</i> | <i>100.0%</i> |

Source: Office for National Statistics 2001 Census (UV022) and 2011 Census (KS301)

Table 19: Provision of care

| | Wrockwardine | | | | Telford and Wrekin 2011 | |
|-----------------------------|-------------------------|---------------|--------------|---------------|-------------------------------|------|
| | 2011 | | 2001 | | % | |
| | People | % | People | % | | |
| Provides no care | 5,250 | 88.8% | 4,319 | 89.3% | 89.2% | |
| Unpaid care | 1-19 hours a week | 482 | 8.2% | 388 | 8.0% | 6.2% |
| | 20-49 hours a week | 68 | 1.2% | 47 | 1.0% | 1.6% |
| | 50 or more hours a week | 112 | 1.9% | 85 | 1.8% | 3.0% |
| Total providing care | 662 | 11.2% | 520 | 10.7% | 10.8% | |
| <i>All usual residents</i> | <i>5,912</i> | <i>100.0%</i> | <i>4,839</i> | <i>100.0%</i> | <i>100.0%</i> | |

Source: Office for National Statistics 2001 Census (UV021) and 2011 Census (KS301)

Notes and definitions

Household deprivation

The 2011 Census categorises households on their deprivation across four dimensions

- Employment – Any member of the household aged 16-74 who is not a full-time student is either unemployed or permanently sick
- Education – No member of the household aged 16 to pensionable age has at least 5 GCSEs (grade A-C) or equivalent AND no member of the household aged 16-18 is in full-time education
- Health and disability – Any member of the household has general health 'not good' in the year before census or has a limiting long term illness
- Housing – The household's accommodation is either overcrowded (occupancy indicator is -1 or less) OR is in a shared dwelling OR does not have sole use of bath/shower and toilet OR has no central heating.

Household Reference Persons

HRPs provide an individual person within a household to act as a reference point for producing further derived statistics and for characterising a whole household according to characteristics of the chosen reference person.

- For a person living alone, it follows that this person is the HRP.
- If a household contains only one family, then the HRP is the same as the Family Reference Person (FRP).
- If there is more than one family in a household, the HRP is chosen from among the FRPs using the same criteria used to choose the FRP i.e selected on the basis of their economic activity, in the priority order.
 - Economically active, employed, full-time, non-student
 - Economically active, employed, full-time student
 - Economically active, employed, part-time, non-student
 - Economically active, employed, part-time, student
 - Economically active, unemployed, non-student
 - Economically active, unemployed, student
 - Economically inactive, retired
 - Economically inactive, other
- If some are all FRPs have the same economic activity, the HRP is the eldest of the FRPs, if some or all are the same age, the HRP is the first of the FRPs from the order in which they were listed on the questionnaire.
- If a household is made up entirely of any combination of ungrouped individuals and other related families, the HRP is chosen from among all people in the household, using the same criteria used to choose between FRPs.
- Students at their non term-time address and short-term migrants cannot be HRP.

Dependent children

A dependent child is a person aged 0-15 in a household (whether or not in a family) or aged 16-18 in full-time education and living in a family with his or her parent(s). It does not include any children who have a spouse, partner or child living in the household.